

2022 Water Production Facilities Project RFQ Pre-Submittal Conference

Ila Drzymala, Ph.D.,P.E.

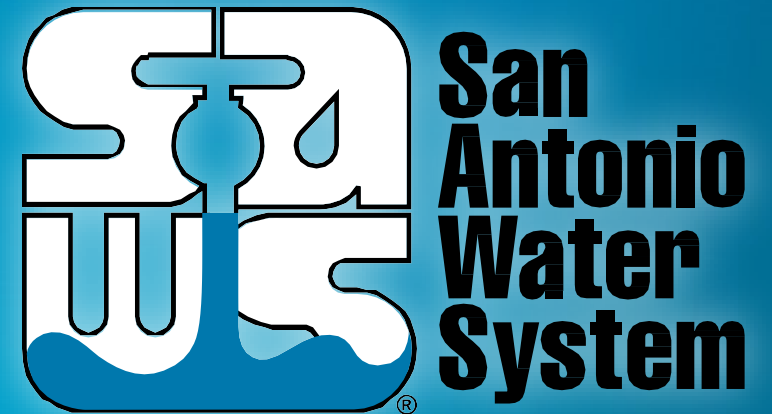
Project Engineer;

Marisol VRobles

Manager – SMWVB Program

Florinda Gonzales

Contract Administrator



MAKING SAN ANTONIO
WATERFUL 

WebEx Housekeeping

- Stay muted during the entire presentation.
- Sign-in using the chat ensuring to select everyone from the drop-down menu.
- Ask questions at any time during the presentation utilizing the chat. Questions will be addressed at the end of the presentation. Ensure to direct your questions to the entire group by selecting everyone from the drop down. All formal responses to questions will be provided via an Addendum.
- Audio only attendees may follow along on the presentation that has been posted to the SAWS solicitation website.

Oral Statements

Oral statements or discussions during this Pre-submittal Conference will not be binding, nor will they change or affect the RFQ or the terms and conditions of the contract. Changes, if any, will be addressed in writing only via an Addendum.

Agenda

- SMWB Requirements
- Communication Reminders
- RFQ Schedule
- Respondent Questions
- Addenda
- Submitting a Response
- Submittal Deadline
- Project Scope
- Overview of Project Locations
- Project Implementation Schedule
- Design Considerations
- Cost Estimates – Design Phase
- Questions

Aspirational SMWB Goal

Industry	Aspirational SMWB Goal	Description
Engineering and Other Professional Services	40%*	Points assessed on tiered scale

*40% of the value of the contract.

SMWB Requirements

- SMWB Certification accepted from the following entities:
 - South Central Texas Regional Certification Agency (SBE, MBE, WBE)
 - Texas H.U.B.
- RFQ Scoring:
 - Local Office
 - Small Business Enterprise (SBE) certification required.
 - Threshold for earning all SMWB points, 15 points maximum

Post Award: Subcontractor Payment & Utilization Reporting (S.P.U.R.) System

WWW.SAWS.SMWBE.COM



San Antonio Water System

OUR MAIN SITE CONTACT SUPPORT

Subcontractor Payment & Utilization Reporting System

Log In

System Training
Learn how to fully utilize our system with a live trainer
Training

About the System
Learn more about this system and how it works today
Information for Vendors

Account Access
Lookup Vendor accounts or reset user passwords
Account Lookup
Forgot Password

The Subcontractor Payment & Utilization Reporting System is powered by B2Gnow Software © Copyright 2018.

- Used to track actual payments to all subconsultants.
- Used to request changes to team.

SMWVB Questions

Questions related to the SMWVB Program, the Good Faith Effort Plan (GFEP), or finding certified subconsultants may be directed to the SMWVB Program Manager until the RFQ is due.

Marisol V. Robles

SMWVB Program Manager

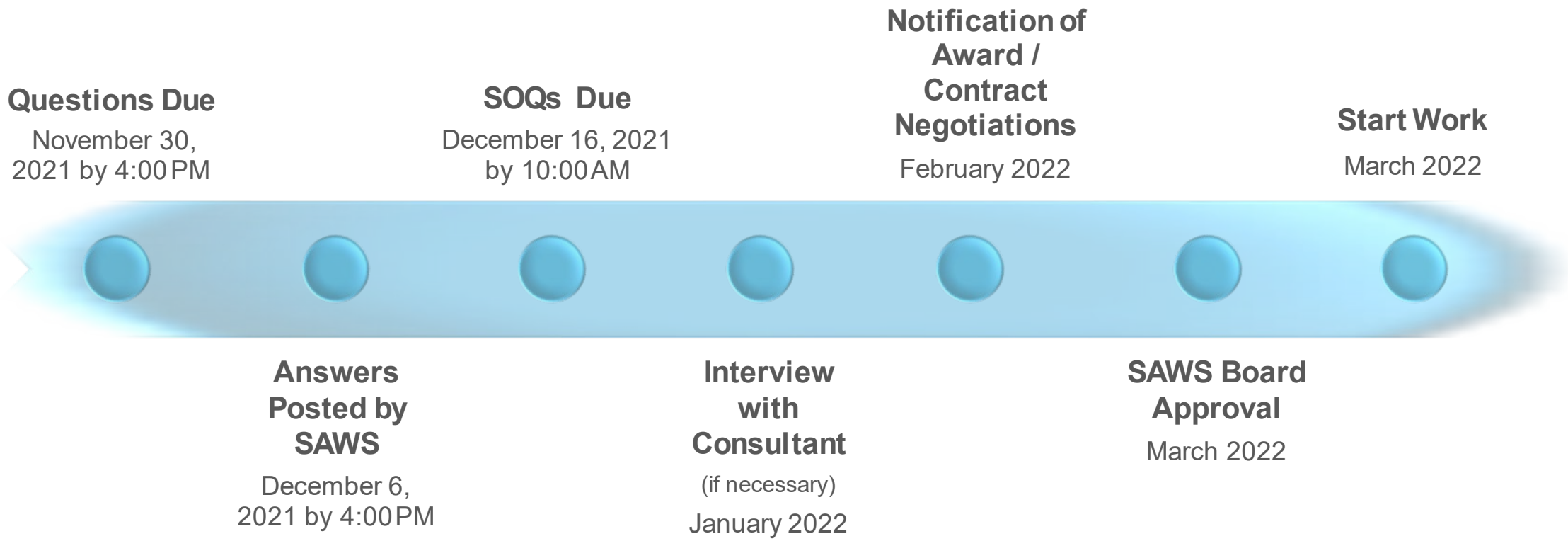
Email: Marisol.Robles@saws.org

Telephone: 210-233-3420

Communication Reminders

- No communication regarding the RFQ with the following:
 - SAWS Project Manager
 - Any other SAWS staff, managers, directors or VPs
 - City Council member or staff
 - SAWS Board of Trustees
- No phone calls, emails, letters, direct/indirect discussion of the RFQ
 - If submitting for the RFQ and/or doing work for SAWS, indicate this when speaking with SAWS staff, but refrain from discussing the RFQ
- From release of the RFQ to Board Award

RFQ Schedule



The dates listed above are subject to change without notice.

Respondent Questions

Must be submitted in writing via e-mail (preferred) or fax no later than November 30, 2021 by 4:00 pm to:

Florinda Gonzales

Contract Administration Department

San Antonio Water System

florinda.gonzales@saws.org

Addenda

- Register as a vendor with SAWS Vendor Registration and Notification
- More than one addendum may be posted on the SAWS website.
- Check SAWS website often and prior to submitting your proposal
- Known addendum changes are:
 - Responses to questions

Submitting a Response

Helpful Reminders

- Thoroughly read the RFQ document
- Maximize points by addressing all items in the order they are identified in the RFQ
- Use fillable forms as response format as directed
- Be specific - Avoid “boiler plate” responses
- Page limit - Twenty-two (22) including fillable evaluation criteria forms
- Other forms, cover page/letter, divider pages do not count towards page limit

Submitting a Response

Helpful Reminders

- Contact the SMWVB Program Manager for assistance, if necessary
- Perform a thorough QA/QC on your proposal prior to submitting
- Utilize the Submittal Response Checklist

Submittal Deadline

- Submittal deadline is **December 16, 2021 at 10:00 am (CDT)**
- “PS-00121_2022 Water Production Facilities RFQ Response” and name of Respondent should be clearly identified on the subject line of the email and/or fax.
- Submit electronic copy
 - contracting@saws.org
 - Email size limit of 10MB
 - One (1) pdf searchable file with bookmarks
 - SAWS recommends submitting your proposal at least two (2) hours prior to the deadline
- Late responses will not be accepted and will be unopened

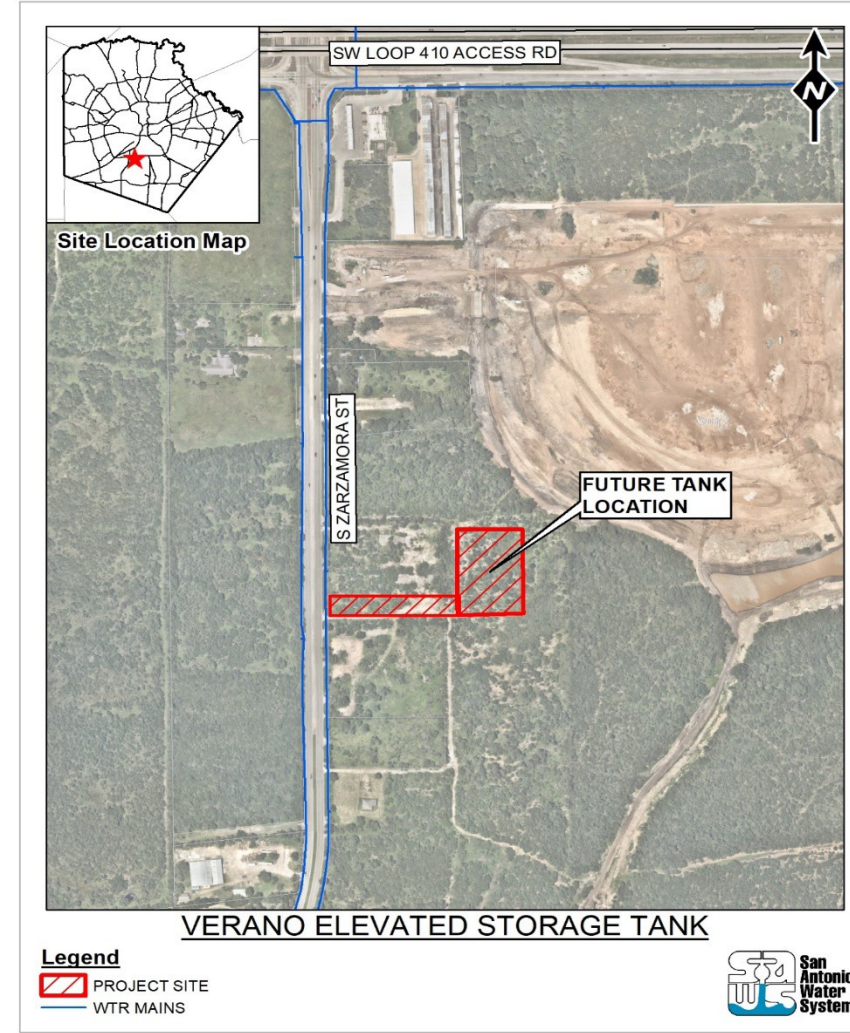
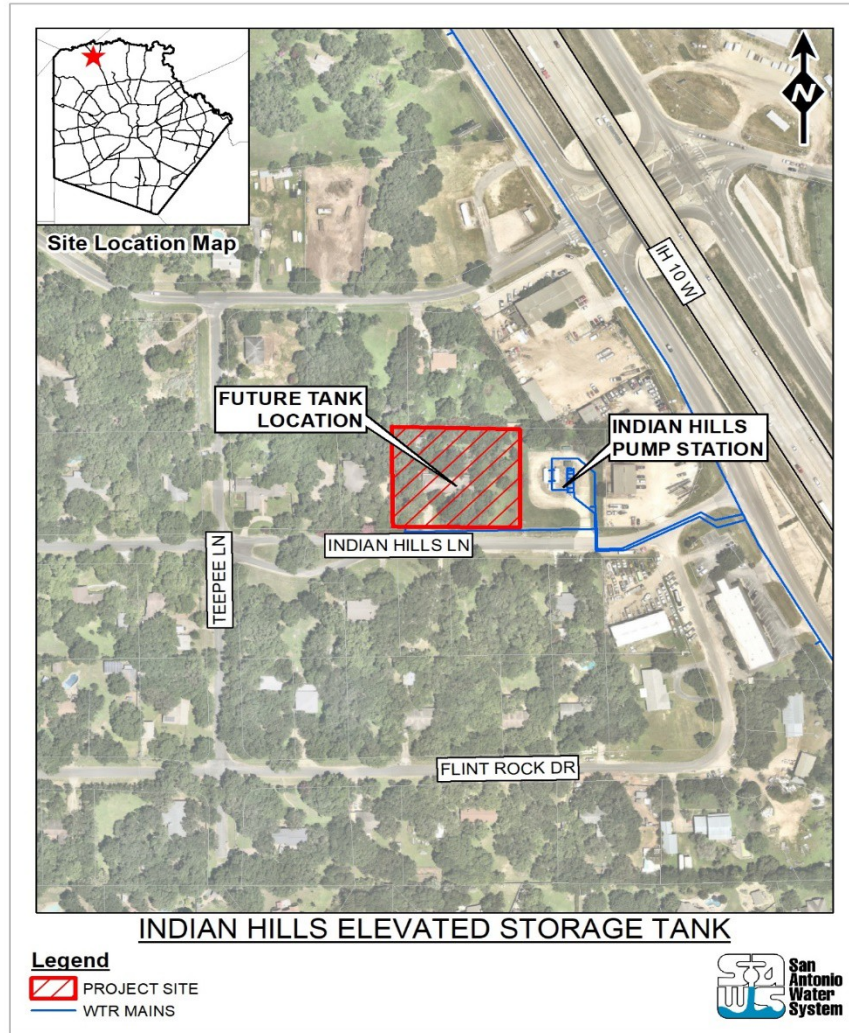
Project Scope

- Projects to be managed, designed, and constructed with highest regard for cost, schedule, and quality
 - Four (4) elevated/ground storage tank projects
 - One (1) pump station project
 - Two (2) work order contracts
- SAWWS anticipates awarding a contract to more than one Consultant as a result of this RFQ

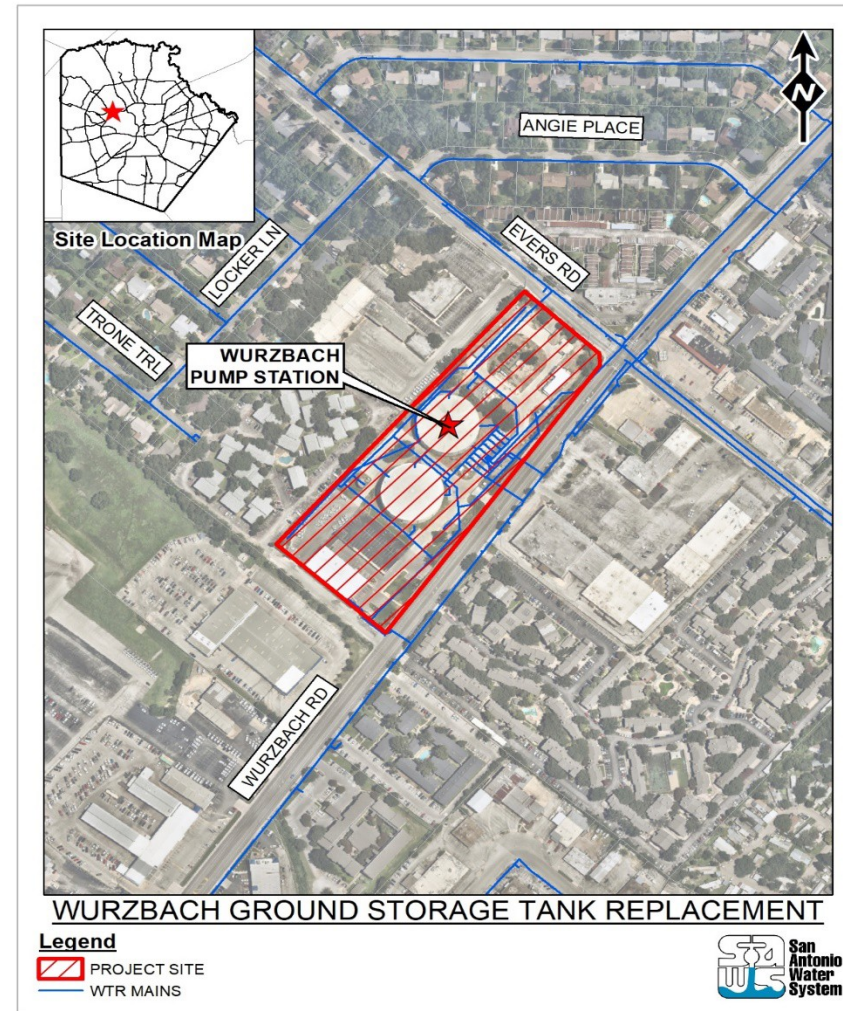
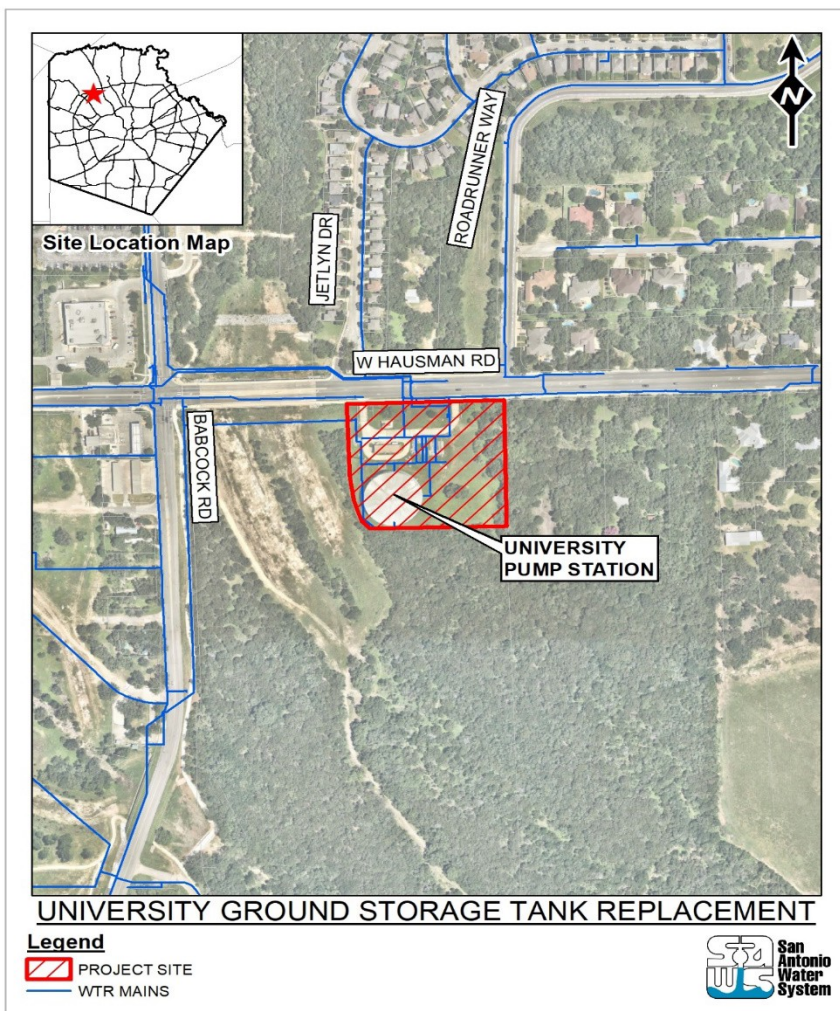
Projects

- Indian Hills Elevated Storage Tank
- Verano Elevated Storage Tank
- University Ground Storage Tank Replacement
- Wurzbach Ground Storage Tank Replacement
- Inwood Pump Station Improvements
- 2022 Mechanical and Electrical Engineering Work Order
- 2022 Production Facilities Engineering Work Order

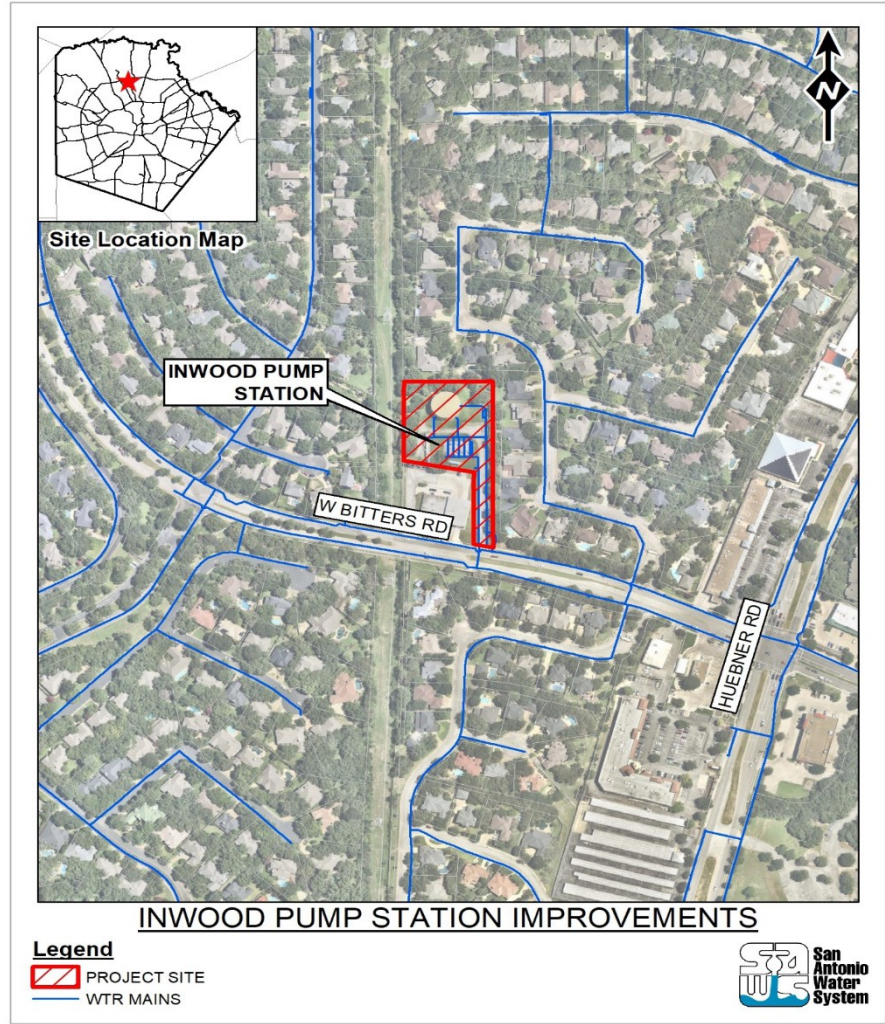
Overview of Project Locations



Overview of Project Locations



Overview of Project Locations (continued)



Project Implementation Schedules

Project	Construction Funding (CIP Year)
Indian Hills Elevated Storage Tank	2024
Verano Elevated Storage Tank	2024
University Ground Storage Tank Replacement	2024
Wurzbach Ground Storage Tank Replacement	2024
Inwood Pump Station Improvements	2024
2022 Mechanical and Electrical Engineering Work Order	2022
2022 Production Facilities Engineering Work Order	2022

Design Considerations

- Contract Documents - Quality and attention to detail
- QMP - QA/QC of work and sub-consultant work
- Adherence to design phase implementation schedules
- Design review workshops and site walkthroughs
- Coordination and feedback - SAWWS end users
- Engineer responsibility - Compliance with existing rules and regulations
- Coordination with other agencies - TXDOT, TCEQ, COSA, Bexar County, etc.

Design Considerations

- Site visits - as many as needed
- Construction phasing
- Construction access and staging
- Survey and topographic information
- Impacts to traffic, homeowners and business owners
- Mobilization / demobilization
- Traffic control plans and coordination
- Technical specifications – Unique project components
- Quality and accuracy of OPCCs

Design Considerations

- SUE to verify existing utilities and avoid conflicts, as needed
- Survey data and benchmarks
- Verify existing services
- Geotechnical Report (with recommendations) and Geotechnical Data Report (GDR)
- Identification of utilities (above and below ground)
- Easements and ROW
- Permits

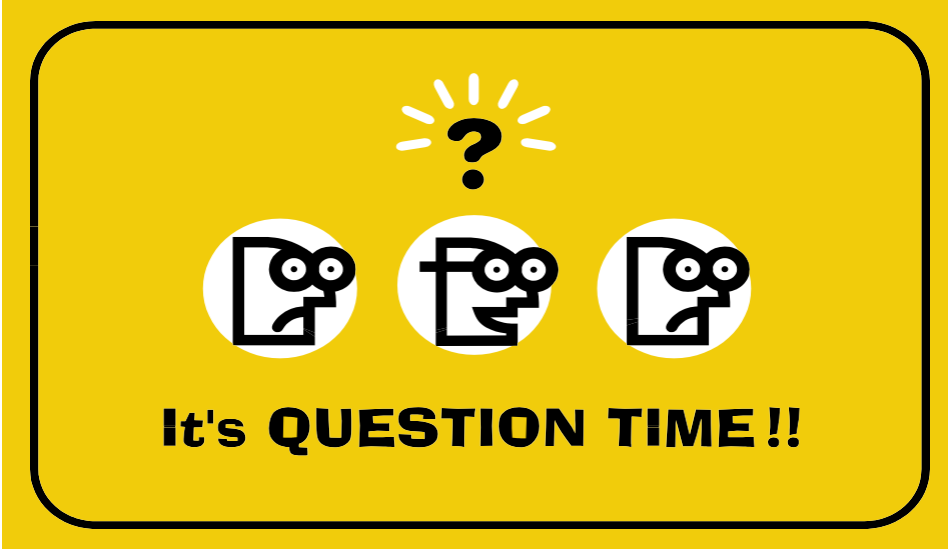
Cost Estimates – Design Phase

Consultant must develop Engineer's Opinion of Probable Construction Costs (OPCC) for each phase (30%, 60%, 90%, and 100%) of the project as per the recommendations of AACE International as described in Recommended Practices No. 17R-97 and 56R-08

Cost Estimates – Design Phase

Consultants to develop OPCCs for each design phase as follows:

Design Phase	Estimate Class	Expected Accuracy Range
30% Design	Class 3	L: -5% to -15% H: +10% to +20%
60% Design	Class 2	L: -5% to -10% H: +5% to +15%
90% Design	Class 1	L: -3% to -5% H: +3% to +10%
100% Design and Bid Documents	Class 1	L: -3% to -5% H: +3% to +10%



2022 Water Production Facilities Project RFQ Pre-Submittal Conference

Ila Drzymala, Ph.D.,P.E.

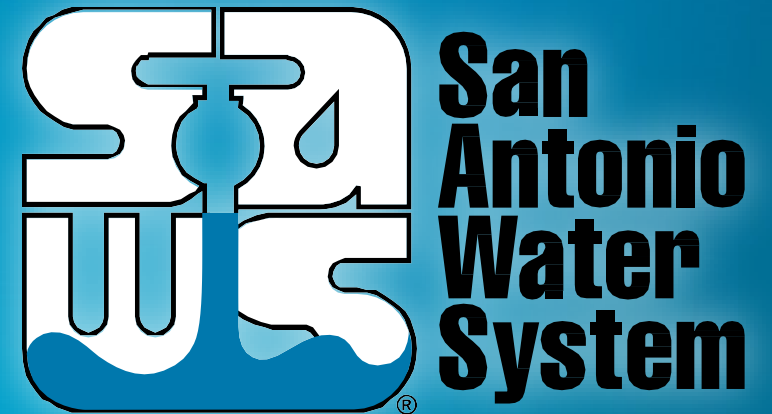
Project Engineer;

Marisol VRobles

Manager – SMWVB Program

Florinda Gonzales

Contract Administrator



MAKING SAN ANTONIO
WATERFUL

